

Jointly imaging velocity model and induced-seismicity locations using a large-N seismic array in northern Oklahoma

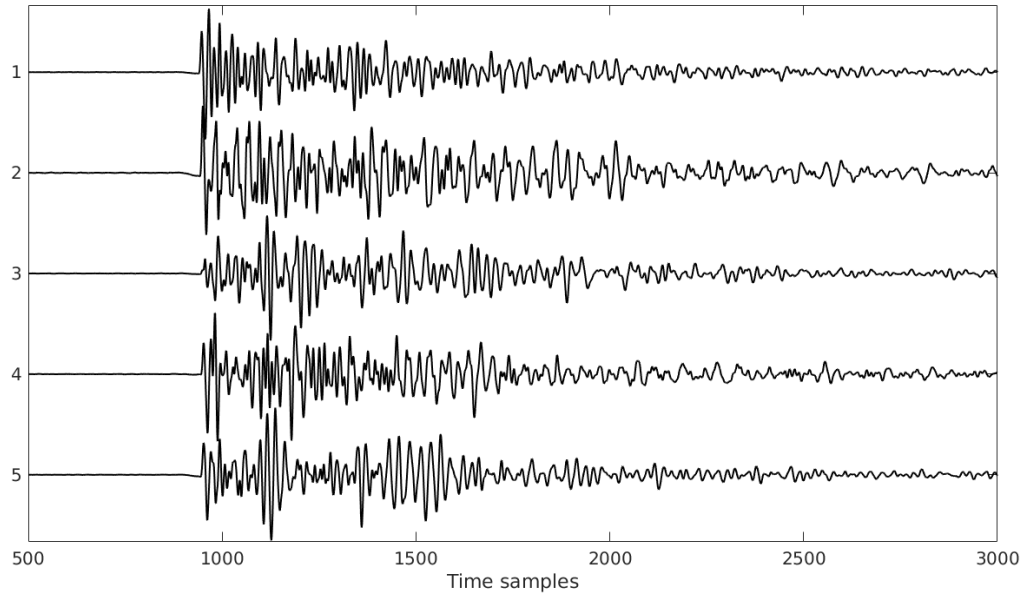
(Last updated in 2021)

Chenglong Duan

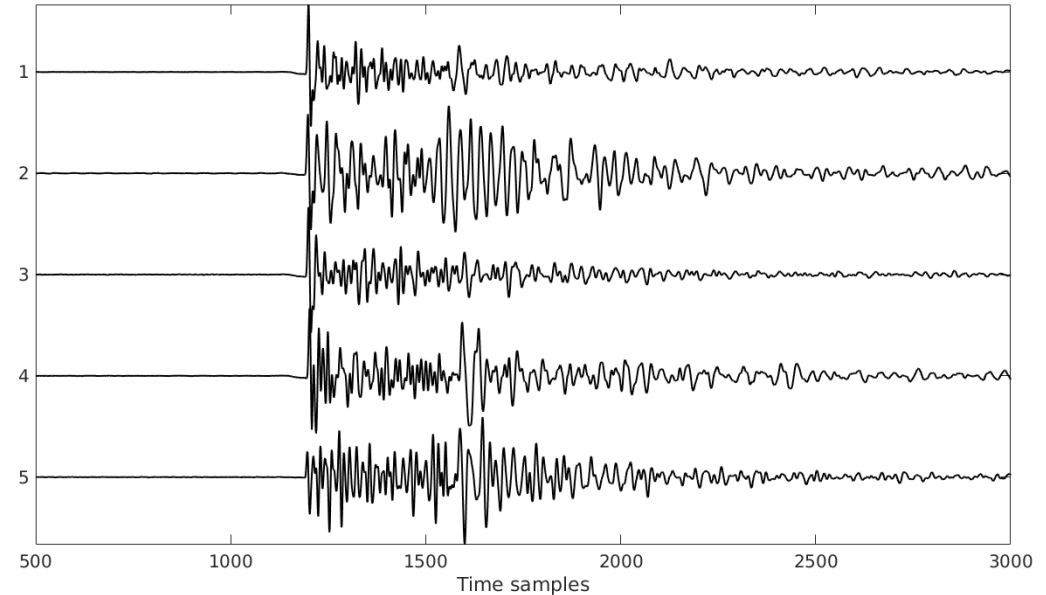
02/10/2022

Truncated induced seismicity events

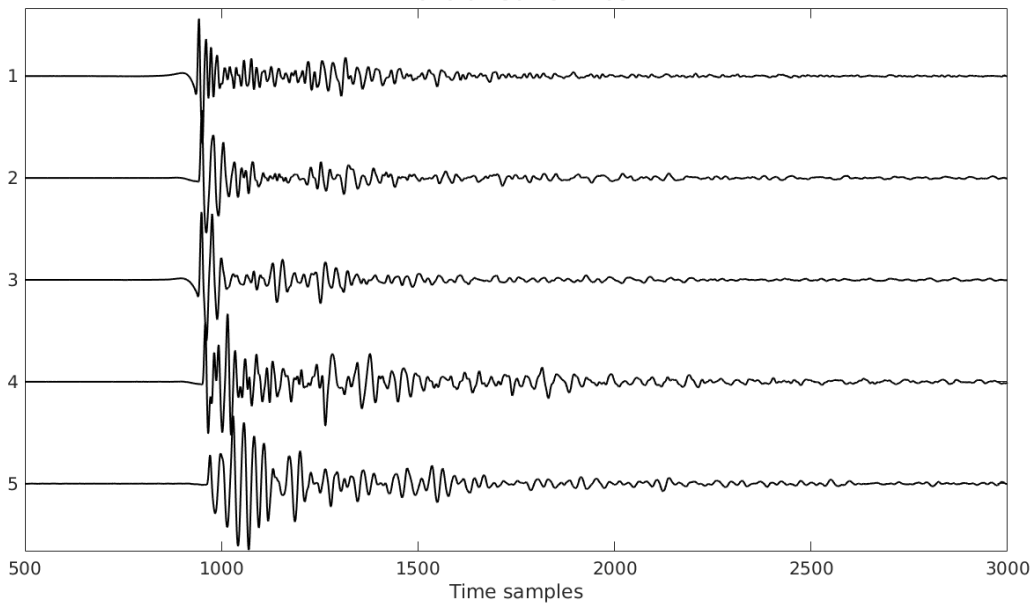
2016-04-16 05:09:08



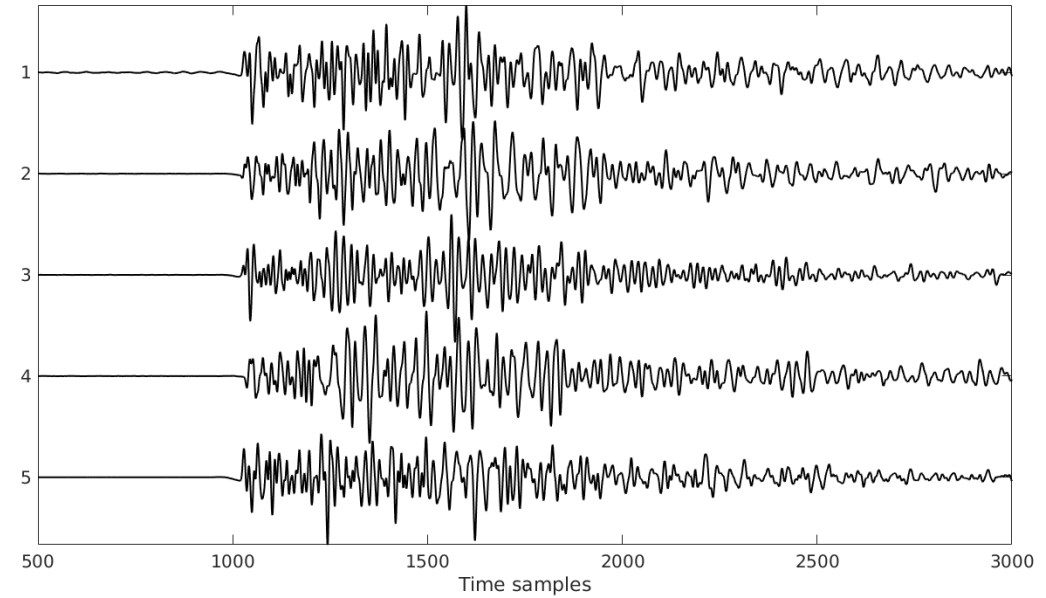
2016-04-20 13:51:21



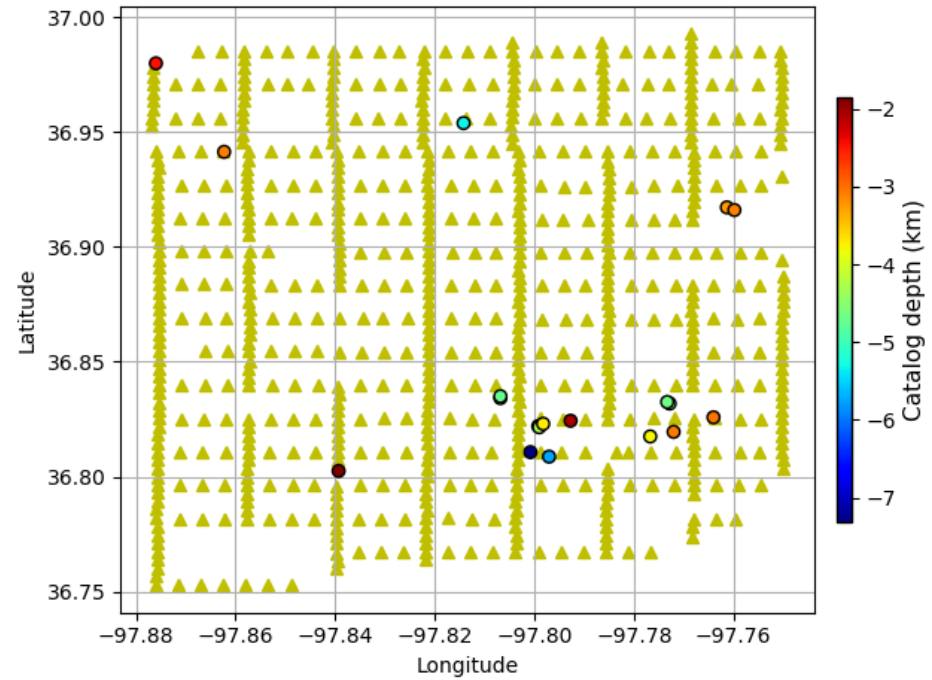
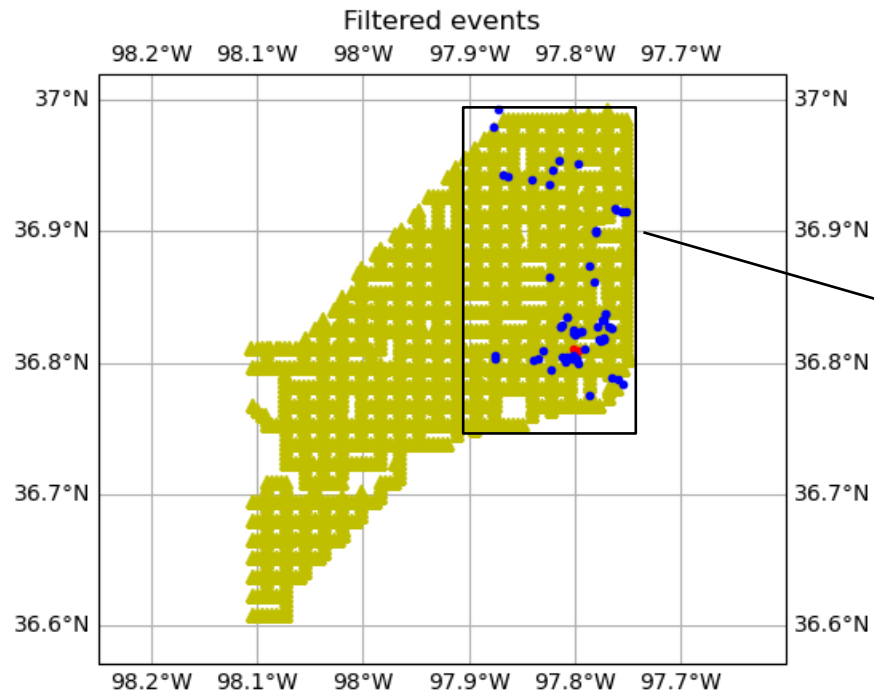
2016-04-30 18:24:05



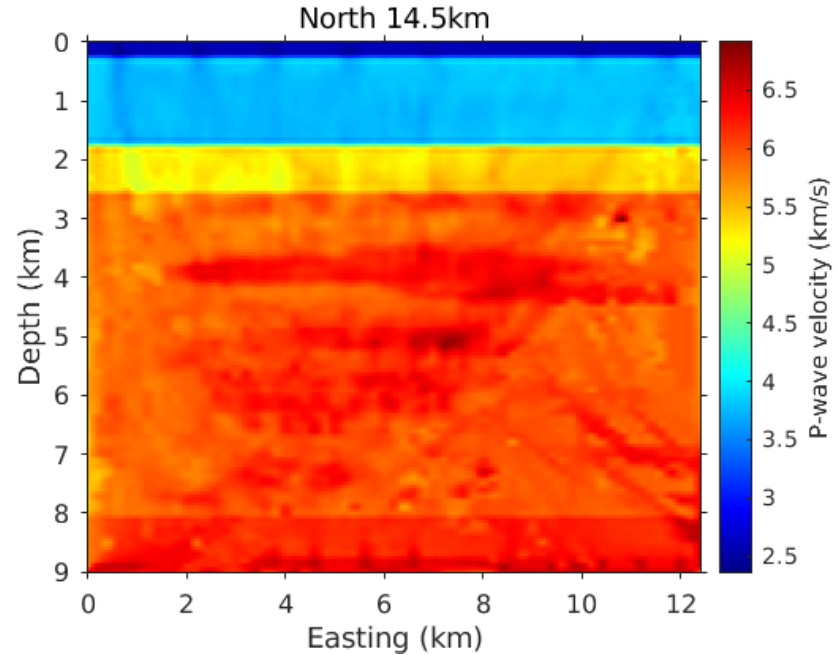
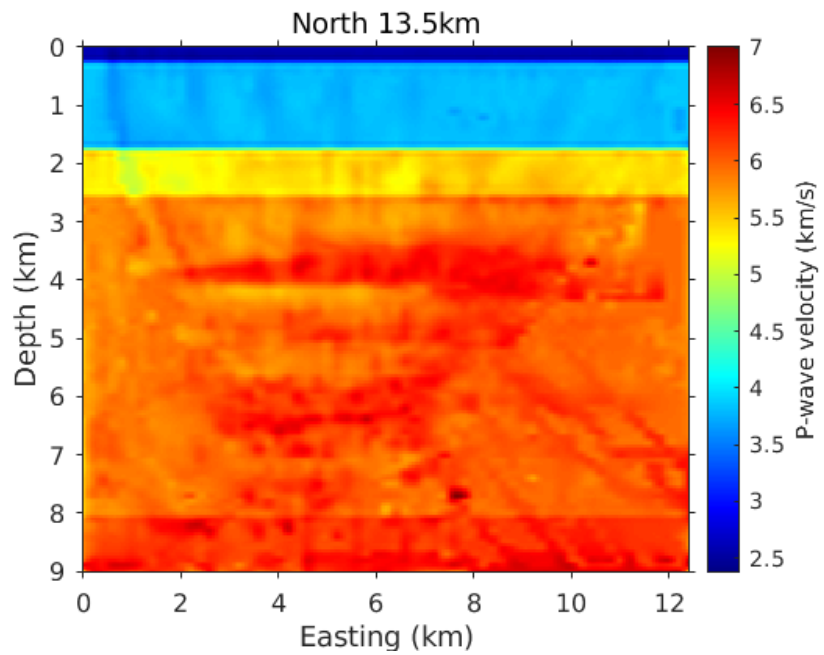
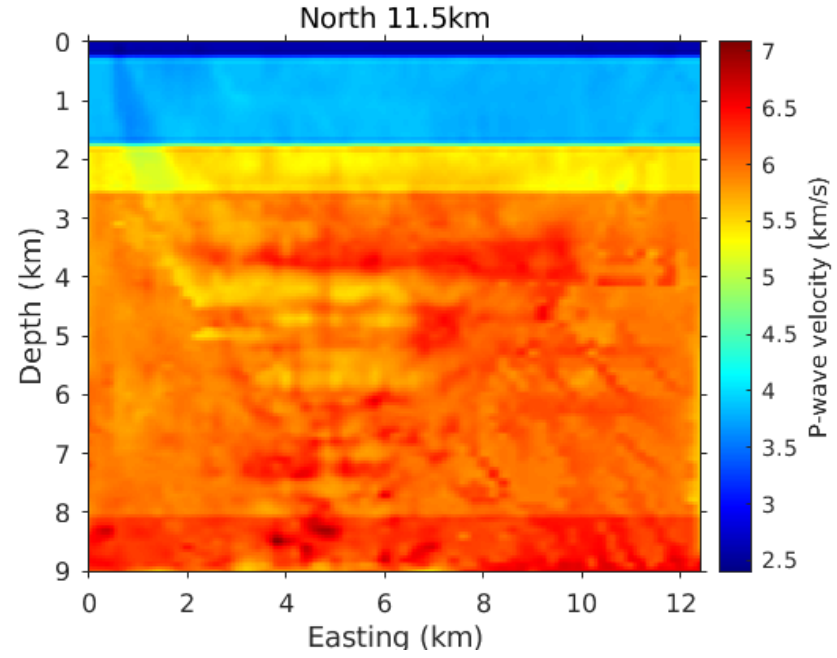
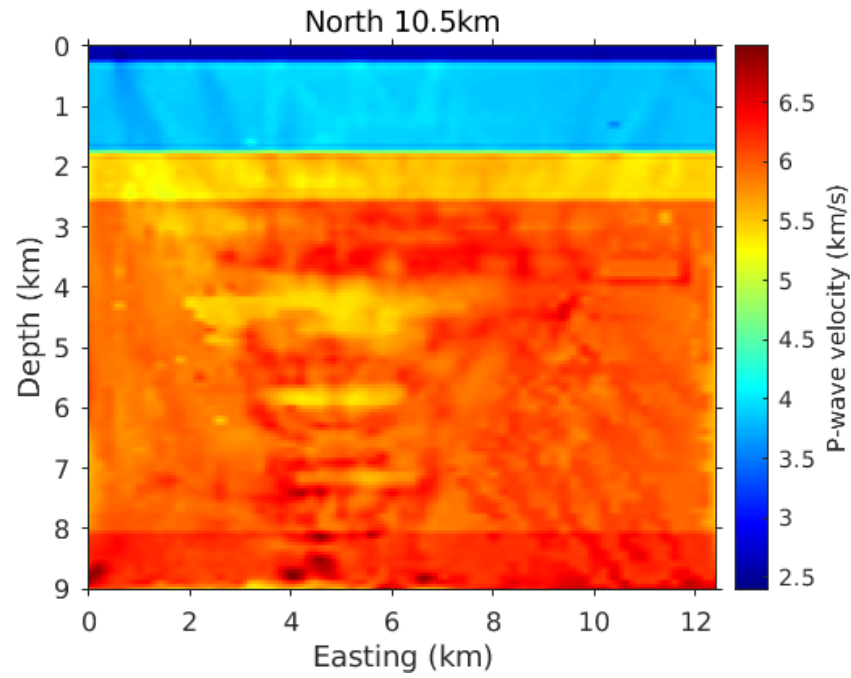
2016-05-03 10:35:02

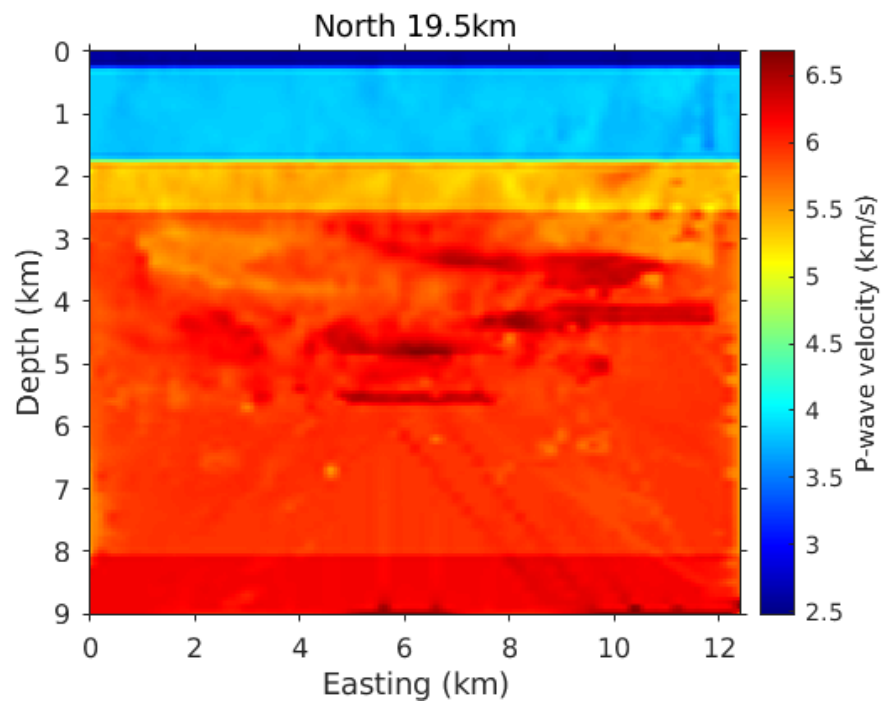
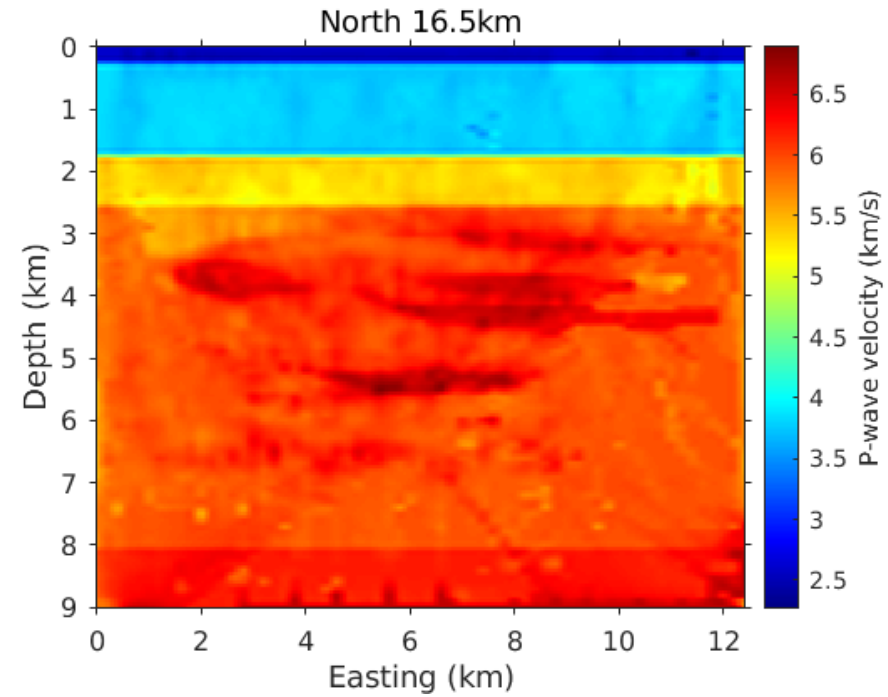
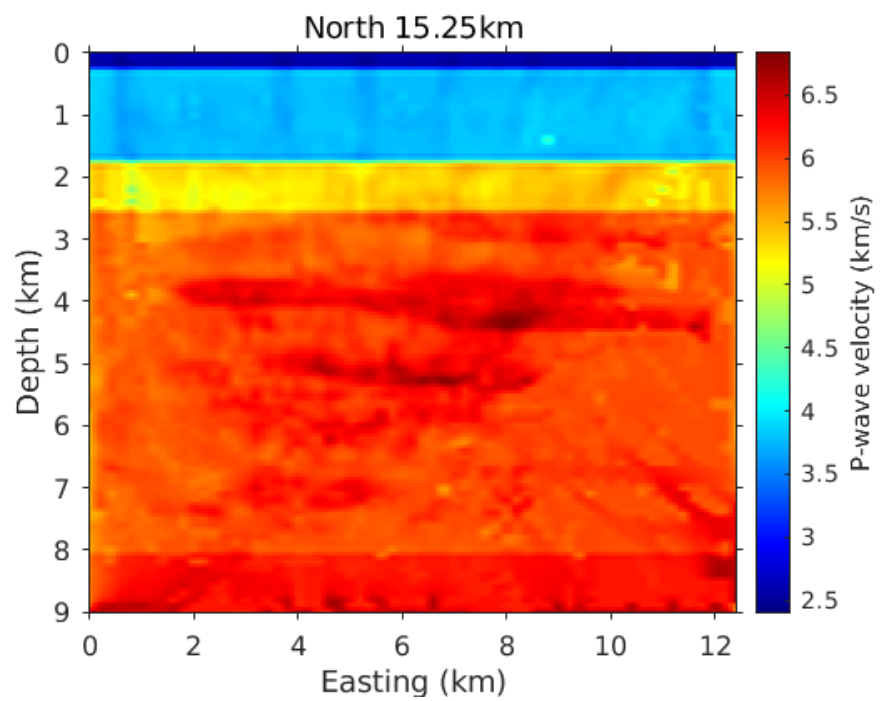


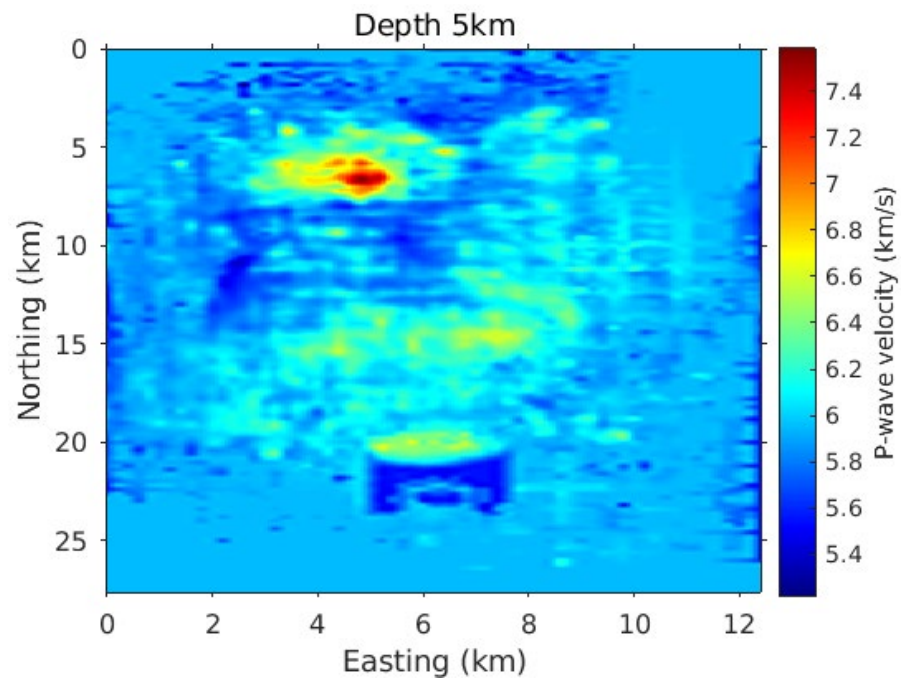
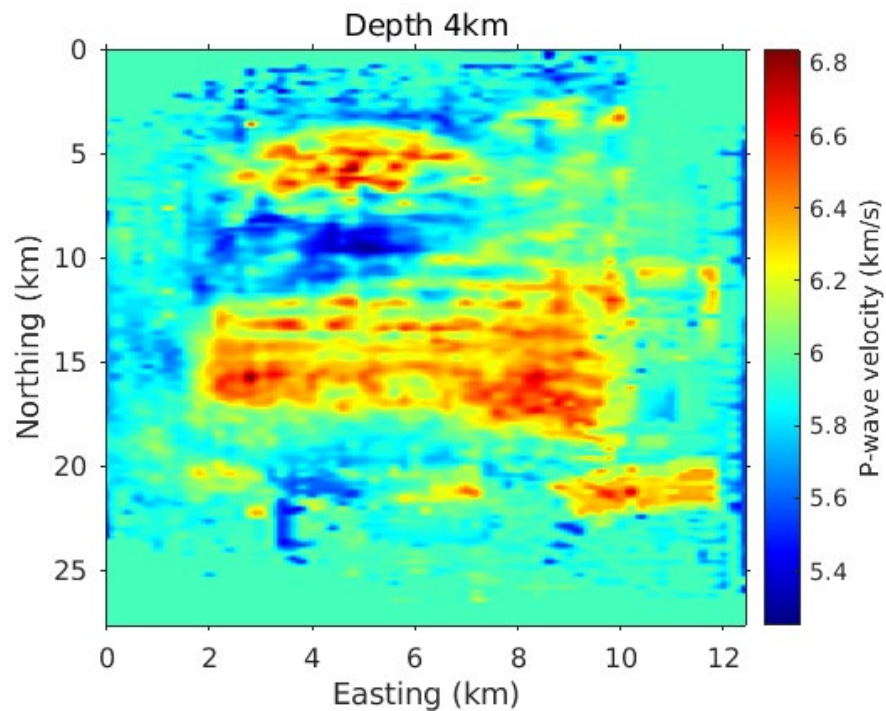
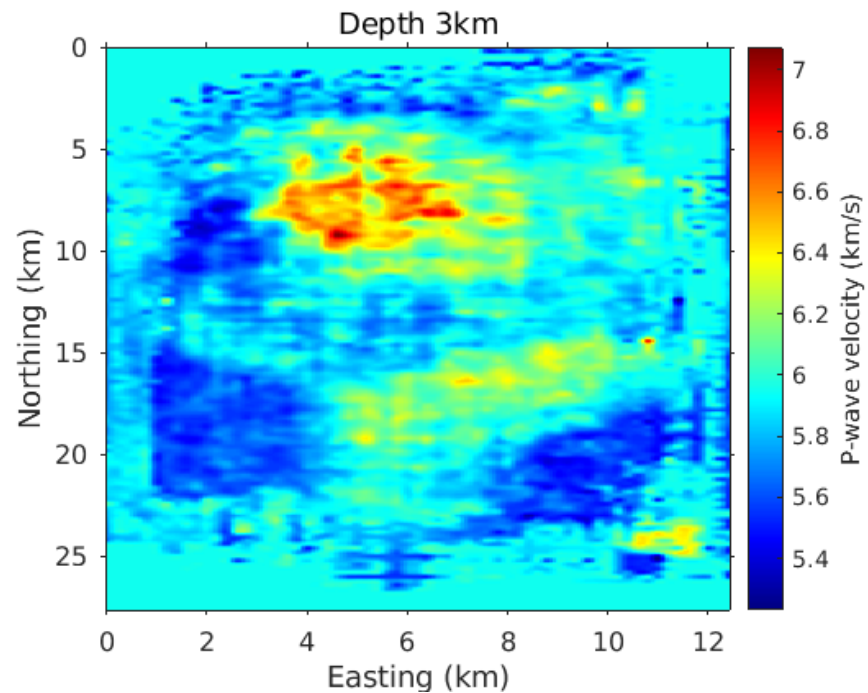
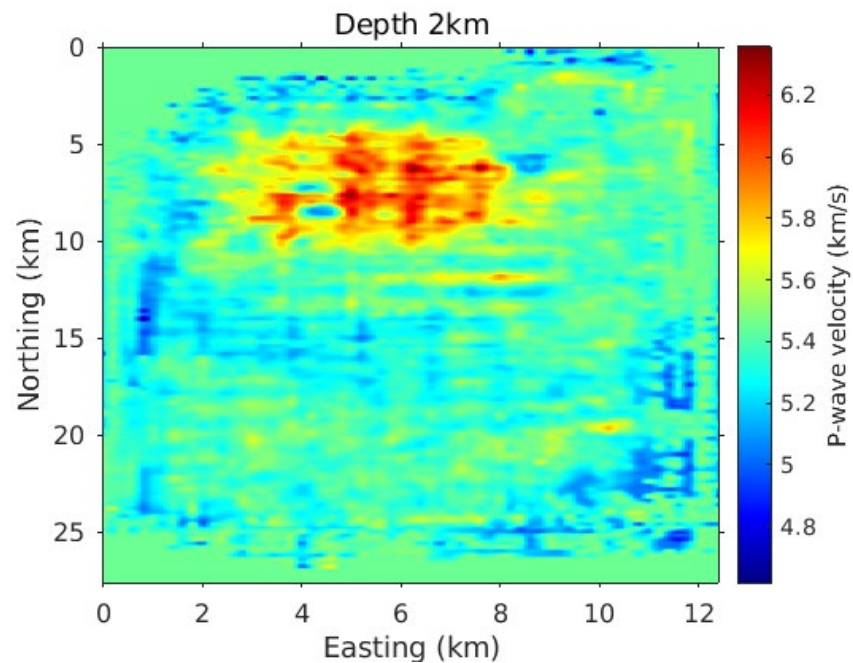
Nodal receiver arrays & catalog locations



3D velocity model







3D earthquake locations

